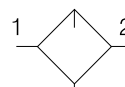


**Lubricator**



**Symbols**



Lubricator with drain

- Flanged 1-1/2" or 2" ports (BSPP & NPT)
- Robust die-cast aluminium construction
- Proportional oil delivery over a wide range of air flows.
- Large oil reservoir

**Options:**

<b>P 3 Z L A</b>				<b>L S M N</b>	
SAE Mtg - No thread	<b>0</b>	None	<b>0</b>		
BSPP flange	<b>1</b>	1-1/2"	<b>B</b>		
NPT flange	<b>9</b>	2"	<b>C</b>		

Port size	Description	Order Code	Flow dm <sup>3</sup> /s *	Max bar	Min temp °C	Max temp °C	Bowl capacity cm <sup>3</sup>	Height mm	Width mm	Depth mm	Weight kg
-	Lubricator	<b>P3ZLA00LSMN</b>	>666	17.5	0	60	600	460	200	182	6.5
1-1/2"	Lubricator	<b>P3ZLA1BLSMN</b>	>666	17.5	0	60	600	460	200	182	6.5
2"	Lubricator	<b>P3ZLA1CLSMN</b>	>666	17.5	0	60	600	460	200	182	6.5
2"	Central airline lubricator with electrical oil level control	<b>P3ZLA1CEMMW</b>	>666	10	5	60	5000	608	250	237	18
2"	Central airline lubricator with aluminium bowl	<b>P3ZLA1CMMMW</b>	>666	10	5	60	5000	608	250	237	18

\* flow with 6,3 bar inlet pressure and 0,5 bar pressure drop.

**Technical Information**

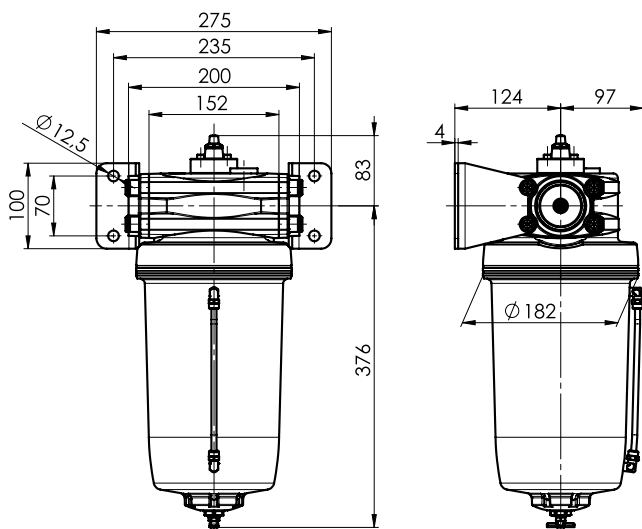
Fluid:	Compressed air
Maximum inlet pressure*:	10 bar
Temperature range*:	5°C to +60°C

\* Air supply must be dry enough to avoid ice formation at temperatures below +2° C  
 Low flow start point (lubrication pick-up): at 6.3bar inlet pressure 0.5 dm<sup>3</sup>/s  
 Typical flow with 6.3bar inlet pressure and 0.7 bar pressure drop: 184 dm<sup>3</sup>/s

**Material Specification**

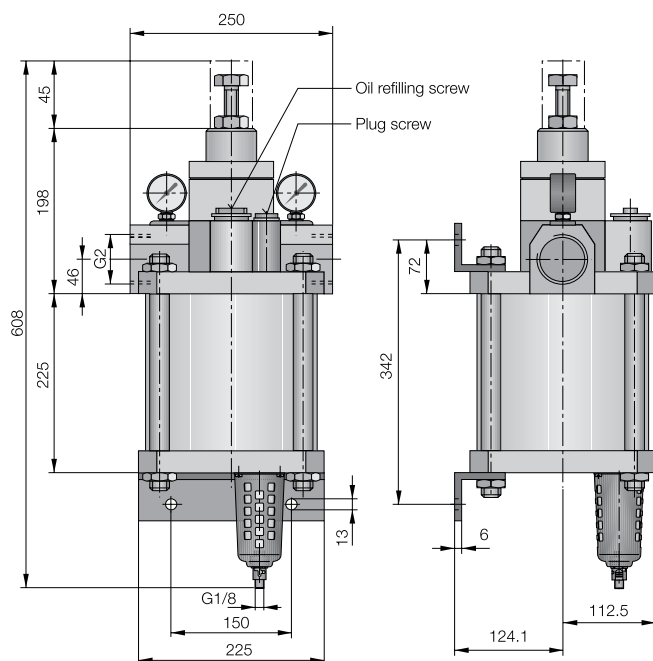
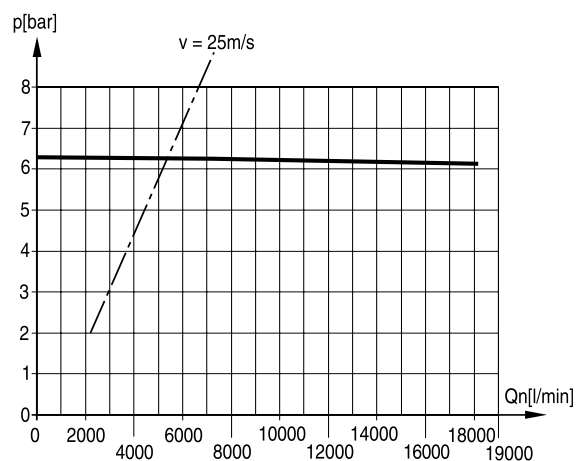
Body:	Aluminium
Sight dome:	Polyamide
Seals:	Nitrile NBR

**Dimensions (mm)**

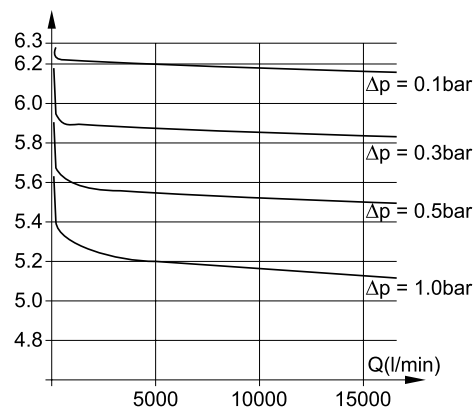


**Flow characteristics**

**(2") Lubricator**



**( 2" ) Central Airline Lubricator**



**Service kits**

Description	Order code
Drip control housing	<b>P3ZKA00PG</b>